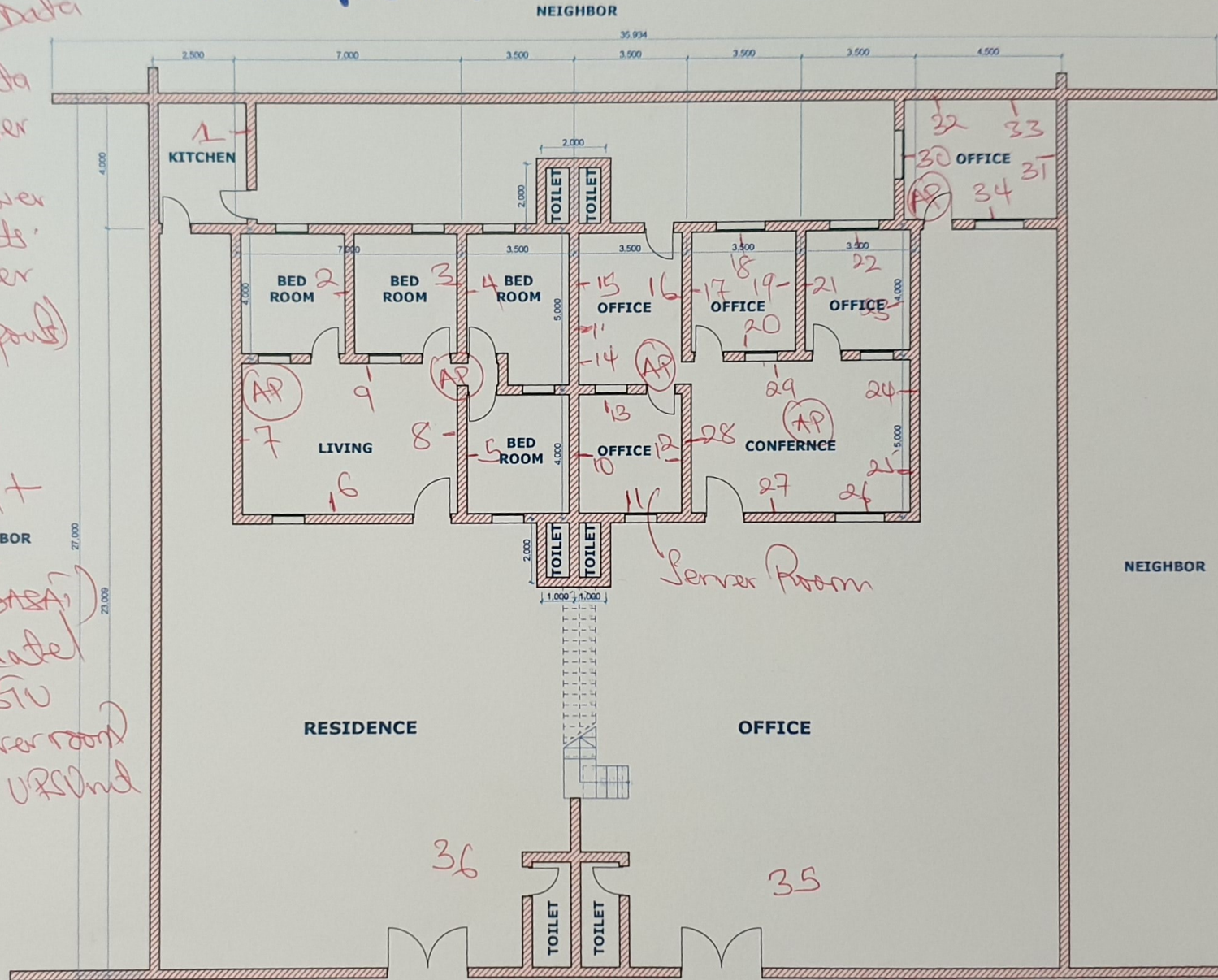


# E1 Fula

1. 5 X AP Single Data
2. 36 Double Data
3. 36 Double power sockets
4. 5 Single power sockets
5. Confirm server room (Add data ports)
6. HF Base
7. VHF Base
8. Motorola IP+
9. 42 U Rack
10. VCAT (LUDASA)
11. Fiber Sockets
12. 2x24,000 BTU AC (Server room)
13. 2x10KVA UPS and
- 14.



MAIN ROAD